



£125 Per Person Per Week

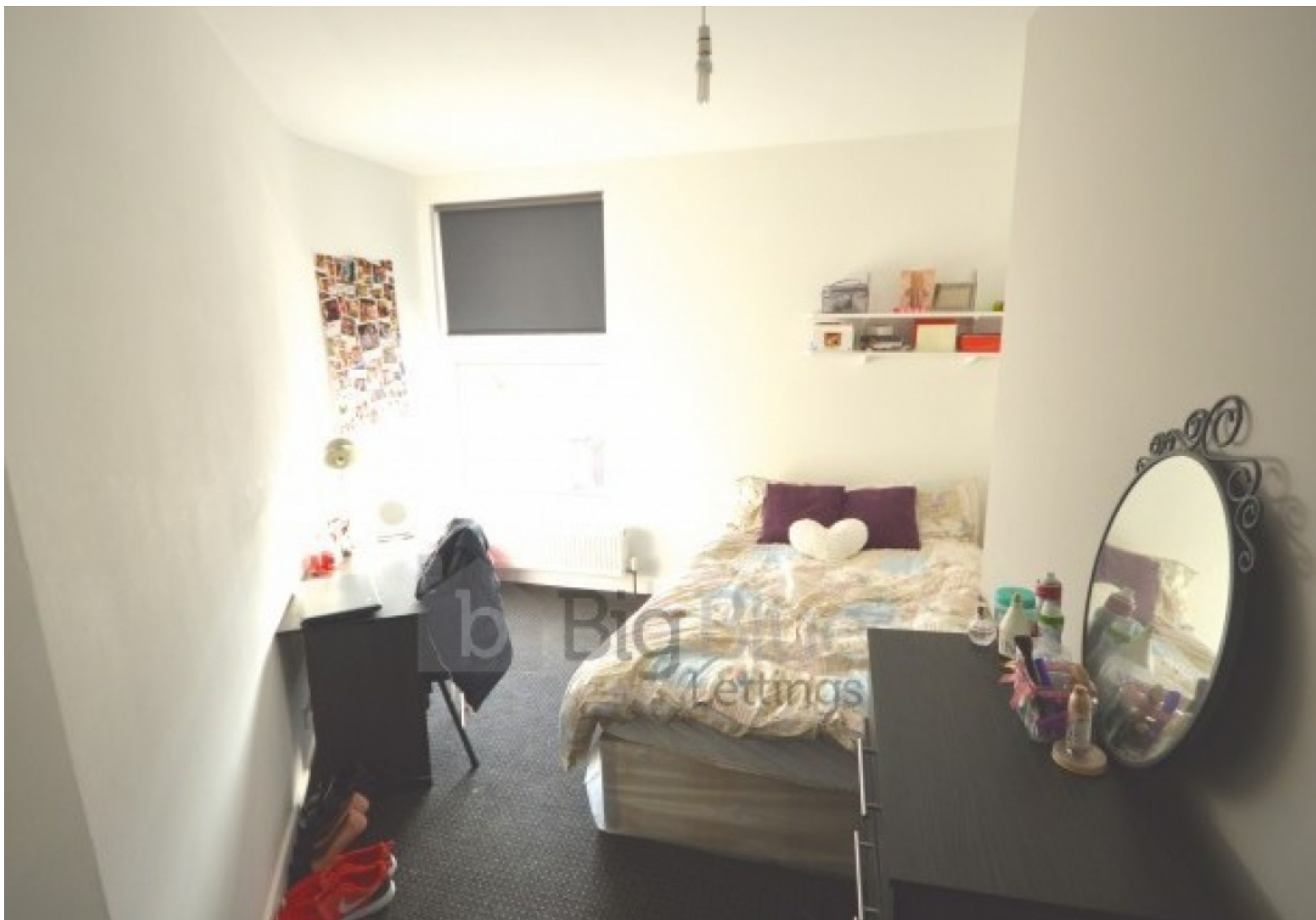
5b Chestnut Avenue, Hyde Park, Four Bed, Leeds

Flat | 4 Bedrooms | 1 Bathroom

0113 8715151



www.bigbluelettings.co.uk



Step Inside

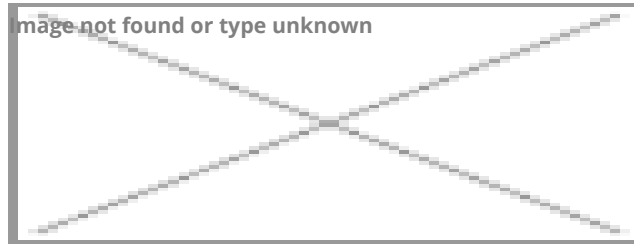
Key Features

- Open plan living kitchen
- Washing Machine
- Double Glazed
- Gas Central Heating
- Double beds
- Big Rooms
- Great view
- Garden
- Popular location
- Off Street Parking

Property Description

Rent: £125PPPW. .Available From 1 July, Newly refurbished student property to an extremely high standard right at the heart of Hyde Park! Property benefits from open plan living kitchen with washing machine, large bedrooms and a great view. This property is suitable for students and professionals.

Main Particulars



Rent: £125 PPPW. Properties available From 1 July.

First floor and second floor 4 bedroom duplex apartment. Recently fitted kitchen, lounge with fitted flat screen TV. Spacious family bathroom. 4 double bedrooms and large lounge with surround glazed window. Front garden.

- 4 Double Bedrooms
- Fitted Kitchen/Lounge
- Garden



Telephone: 0113 8715151



www.bigbluelettings.co.uk