



£130 Per Person Per Week

20 Chestnut Grove, Hyde Park, Three Bed, Leeds

Town House | 3 Bedrooms | 2 Bathrooms

0113 8715151



www.bigbluelettings.co.uk



Step Inside

Key Features

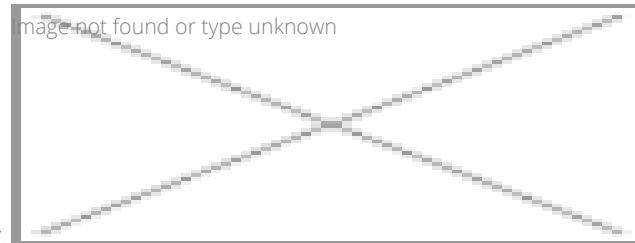
- Great Location
- New Kitchen
- Double rooms
- Double Beds
- Large lounge & 2 Bathrooms
- Dining table & chairs
- Double glazed
- Gas central heating
- Front/back garden
- Prime location

Property Description

£130pppw - Properties available From 1 July. BILLS INCLUDED GAS,ELECTRICITY,FIBRE INTERNET,WATER Located in the desirable and popular area of Hyde Park we are happy to offer this beautifully presented three bedroom town house. The property has a newly fitted extended kitchen and is fully furnished to good standard. The property is always a popular choice for both students and professionals. Key features of the property include; 3 good sized double bedrooms Large Lounge New fitted kitchen Very comfy and warm Central heating Double Glazing

Main Particulars

£130pppw - Properties available From 1 July.

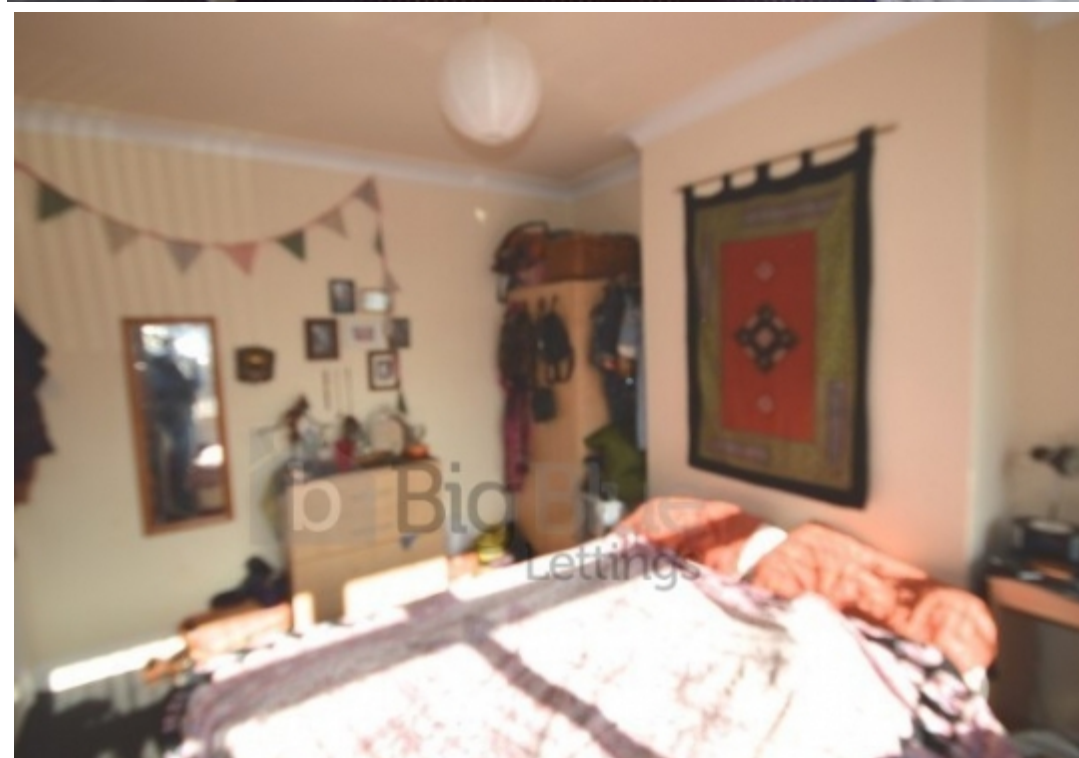


BILLS INCLUDED
GAS,ELECTRICITY,FIBRE INTERNET,WATER

Located in the desirable and popular area of Hyde Park we are happy to offer this beautifully presented three bedroom town house. The property has a newly fitted extended kitchen and is fully furnished to good standard. The property is always a popular choice for both students and professionals.

Key features of the property include;

- 3 good sized double bedrooms
- Large Lounge
- New fitted kitchen
- Very comfy and warm
- Central heating
- Double Glazing



Telephone: 0113 8715151



www.bigbluelettings.co.uk