



£152 Per Person Per Week

1 Brudenell Mount, Hyde Park, Eight Bed, Leeds

Terraced House | 8 Bedrooms | 2 Bathrooms

0113 8715151



www.bigbluelettings.co.uk



Step Inside

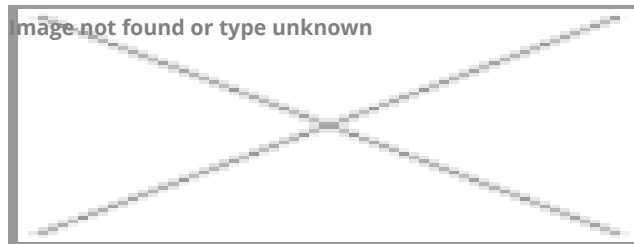
Key Features

- Double Rooms
- Double Beds
- Double Glazed
- Fitted Kitchen
- Spacious Lounge
- TV
- Prime Location
- On Street parking

Property Description

*£155pppw. BILLS INCLUDED!!! - Gas, Electric, Water + WIFI * Big Blue Lettings are pleased to introduce this refurbished student house which has 2 bathrooms and 8 bedrooms and each of the bedrooms comes with a double bed, desk with chair and storage space for your clothes. There is a also a large flat screen TV and comfy sofas in the living room and a spacious kitchen which also has a kitchen table, perfect for group dinners and entertaining guests. The house also has 3 bathrooms and is spaced over 4 floors.

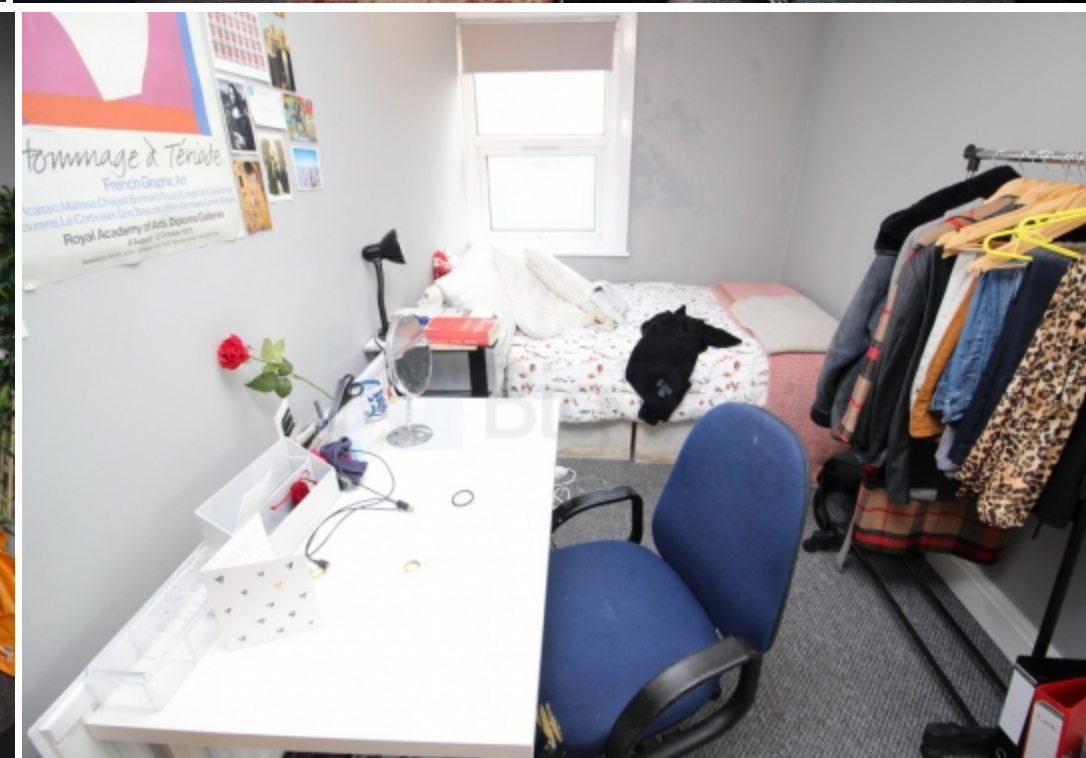
Main Particulars



*£155pppw. BILLS INCLUDED!!! - Gas, Electric, Water + WIFI *

Big Blue Lettings are pleased to introduce this refurbished student house which has 2 bathrooms and 8 bedrooms and each of the bedrooms comes with a double bed, desk with chair and storage space for your clothes. There is a also a large flat screen TV and comfy sofas in the living room and a spacious kitchen which also has a kitchen table, perfect for group dinners and entertaining guests. The house also has 2 bathrooms and is spaced over 4 floors.

Located only 10 minutes away from University of Leeds, this is ideal for any student who wants to ensure they make it to their 9am lectures while being close to all the student hotspots; it's all about balance, after all. In 3 minutes you will be at your local Sainsbury's, perhaps to pick up the ingredients for a house dinner. Popular for its cocktails, The East Village is just 2 minutes away, making a great casual outing with friends.



Telephone: 0113 8715151



www.bigbluelettings.co.uk